

SYLVANIA

HI-SPOT ES50 & ESD50
A new era for halogen lighting



Small and transformer-free, it sets you free



Mini halogen, no transformer.

Mini halogen has always carried with it the burden of the transformer...until now. Introducing the new Hi-Spot ES50 range. A major innovation from Sylvania, it marks the start of a new era for halogen lighting.

AT LAST, MINIATURISATION STRAIGHT FROM THE MAINS.

It's the same diameter as a normal 12V MR16 lamp but, thanks to its revolutionary new 'W' filament, works straight from the mains *without* a transformer. Not only does this free you from the cost of installing transformers and circuitry, it also frees you from the constraints that they bring when designing original fixtures. The range gives you the choice of aluminium Hi-Spot ES50 or dichroic Hi-Spot ESD50 reflectors available in two different beam angles. Using the simple turn and lock GU10 or GZ10 sockets - which are destined to become a European standard - the lamp is held securely without the need for springs or screws. And double fusing means safety is built-in to give you the freedom to design without compromise.

Sylvania. A source of inspiration.

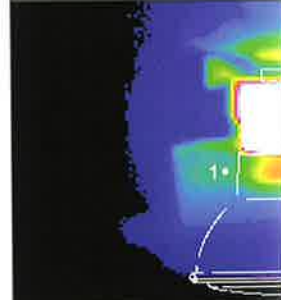
THE REVOLUTIONARY 'W' FILAMENT. ▼



THE TURN AND LOCK GU10 CAP. ▼



THE ES50 ALUMINIUM DICHROIC REFLECTOR



Location	
Plastic ring (1)	
Top of fixture (2)	
Ceiling plane	

ES50 NO TRA



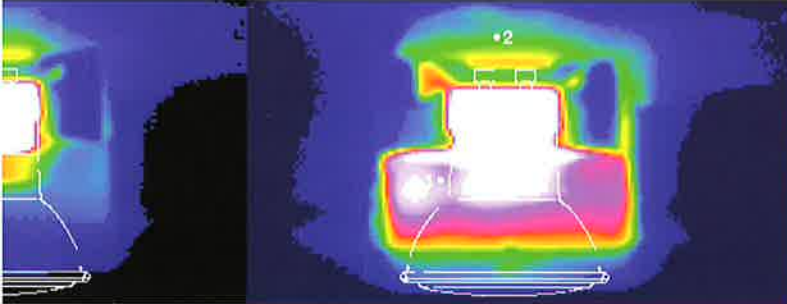
CHANGING AND INSTALLING LAMPS HAS NEVER BEEN EASIER THANKS TO THE TURN AND LOCK GU10 AND GZ10 SOCKETS. THE REVOLUTIONARY 'W' SHAPED FILAMENT MAKES THE TRANSFORMER A THING OF THE PAST. LAMPS CAN BE DIMMED WITHOUT THE NEED FOR SPECIALIST DIMMERS.



▼ HI-SPOT ES50 WITH GU10 CAP. HI-SPOT ESD50 WITH GZ10 CAP. ▼



REFLECTOR KEEPS FIXTURES COOL AND THE HIGH OUTPUT ESD50 YIELDS A BRIGHTER LIGHT BUT DIRECTS MORE HEAT BACKWARDS. ▼

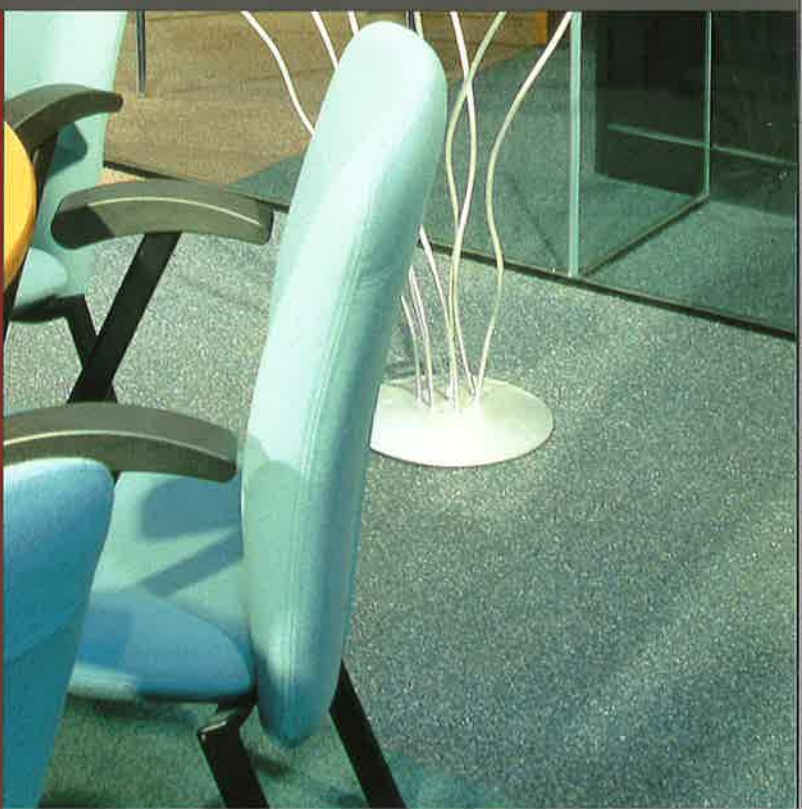


Aluminium ES50 Temp. Index	Dichroic ESD50 Temp. Index ▲
100%	172%
100%	114%
100%	126%

FORMER ▼ STANDARD 12V MR16 WITH TRANSFORMER ▼



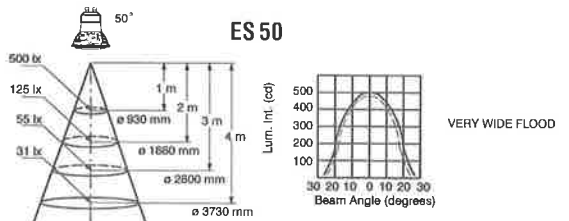
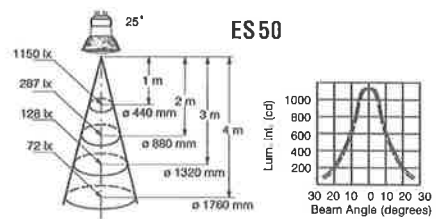
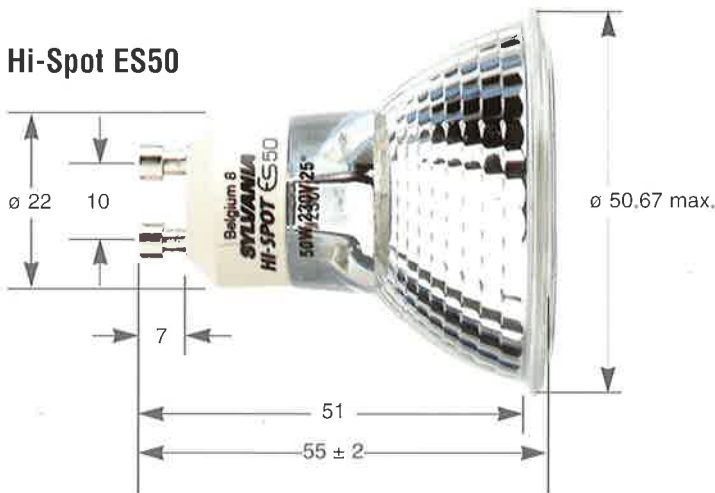
LESS IS MORE FOR FIXTURE DESIGN. BEFORE THE HI-SPOT ES50 GROUPS OF MINI HALOGEN LAMPS NEEDED ONE OR MORE TRANSFORMERS. THE HI-SPOT ES50 AND ESD50 ALLOW YOU TO USE AS MANY LAMPS ON A LINE AS YOU NEED... TRANSFORMER-FREE, THUS REDUCING THE COST OF OWNERSHIP WHILST FACILITATING GREATER AESTHETICS.



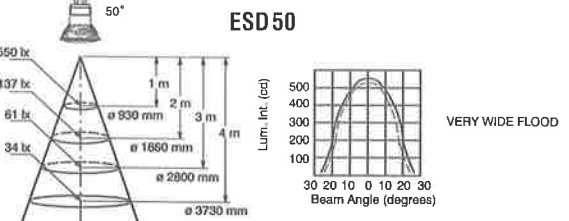
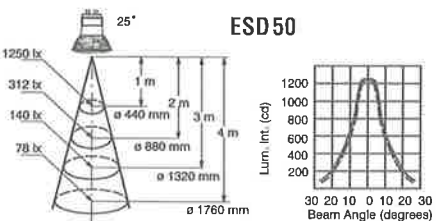
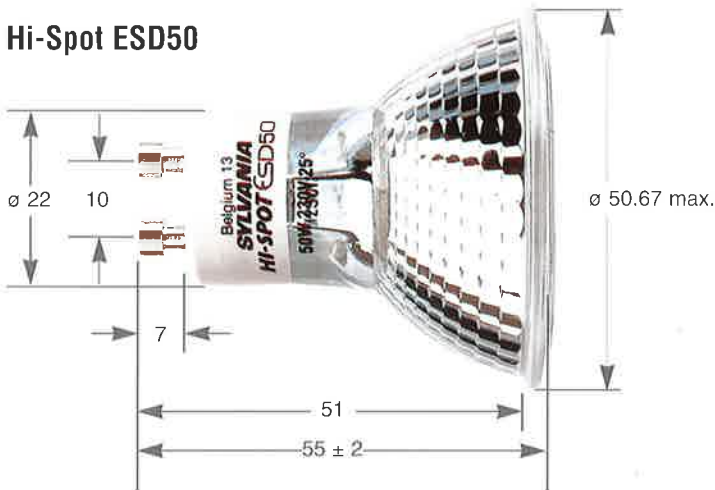
The Hi-Spot® ES50 & ESD50.

Product Description	Wattage (w)	Coating	Max (mm) Overall Length	Max (mm) Reflector Diameter	Cap	Average Life (h)	Max Light Intensity (cd)	Voltage (V)	Beam Angle (°)	Packing Description	Stand. Packing Quantity	Article no. (230/240V)
Hi-Spot ES 50	50	Aluminium	55±2	50.67	GU 10	2000	1150	230/240	25°	bulk	100	21070/21073
Hi-Spot ES 50	50	Aluminium	55±2	50.67	GU 10	2000	1150	230/240	25°	sleeve	15	21071/21074
Hi-Spot ES 50	50	Aluminium	55±2	50.67	GU 10	2000	1150	230	25°	blister	10	21072
Hi-Spot ES 50	50	Aluminium	55±2	50.67	GU 10	2000	500	230/240	50°	bulk	100	21064/21067
Hi-Spot ES 50	50	Aluminium	55±2	50.67	GU 10	2000	500	230/240	50°	sleeve	15	21065/21068
Hi-Spot ES 50	50	Aluminium	55±2	50.67	GU 10	2000	500	230	50°	blister	10	21066
Hi-Spot ESD 50	50	Dichroic	55±2	50.67	GZ 10	2000	1250	230/240	25°	bulk	100	21090/21093
Hi-Spot ESD 50	50	Dichroic	55±2	50.67	GZ 10	2000	1250	230/240	25°	sleeve	15	21091/21094
Hi-Spot ESD 50	50	Dichroic	55±2	50.67	GZ 10	2000	1250	230	25°	blister	10	21092
Hi-Spot ESD 50	50	Dichroic	55±2	50.67	GZ 10	2000	550	230/240	50°	bulk	100	21095/21098
Hi-Spot ESD 50	50	Dichroic	55±2	50.67	GZ 10	2000	550	230/240	50°	sleeve	15	21096/21099
Hi-Spot ESD 50	50	Dichroic	55±2	50.67	GZ 10	2000	550	230	50°	blister	10	21097

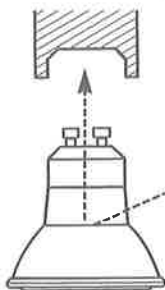
Hi-Spot ES50



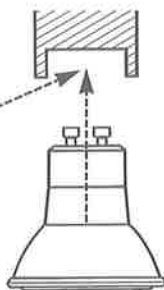
Hi-Spot ESD50



ES50 - GU10 cap



ESD50 - GZ10 cap



For added safety Sylvania has introduced the GZ10 cap for the dichroic ESD50. The ESD50 enjoys a higher light output than its aluminised counterpart the ES50, but directs less heat downwards causing fixture temperatures to rise. The introduction of the GZ10 cap prevents the use of the ESD50 in temperature sensitive fixtures designed for the ES50. However, the ES50 will be transferable into ESD50 fixtures as there would be no increase in fixture temperature.

Also available - the full range of Hi-spot retrofit halogen lamps with E14 and E27 bases. separate leaflet available on request. Sylvania reserves the right to change data and specification without notice. Data for guidance only.