

SYLVANIA

COOLFIT

Halogen that stops your temperature rising





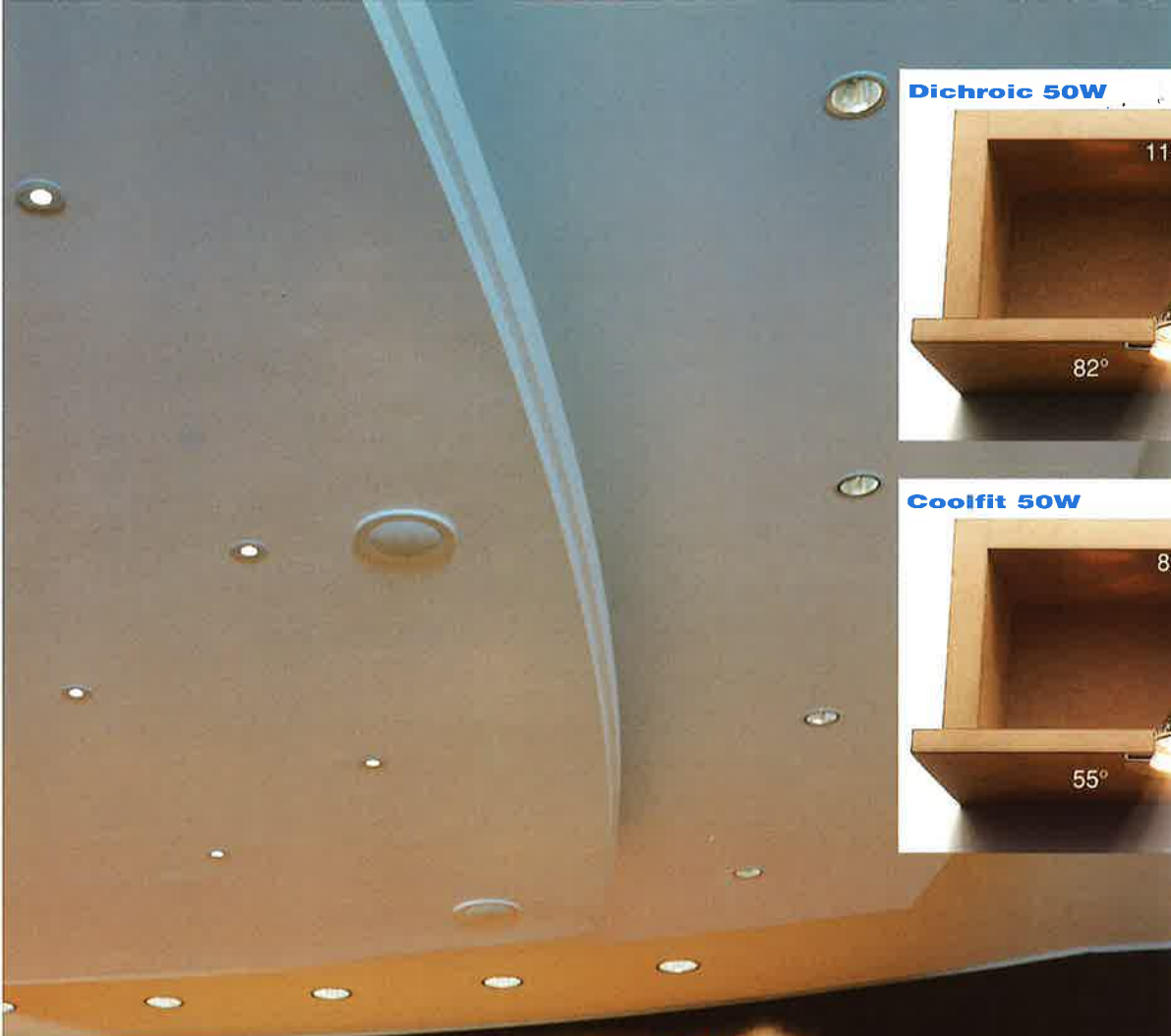
Extensive tests have shown that new Coolfit lamps can deliver a massive reduction of heat behind the lamp when compared to normal dichroics. This means the fixture

NEW COOLFIT. LESS HEAT ABOVE AND CRISP LIGHT BELOW.

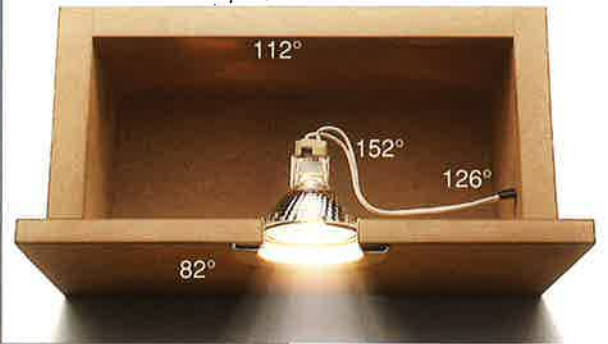
doesn't get damaged, the ceiling stays clean and unmarked, the transformer and wiring are protected and customers don't get all hot and bothered. There's no distracting backlight either, and the quality of light remains the same throughout the life of the lamp, thanks to a special non-degrading reflective coating. So next time you get into a heated debate about halogen, cool it with Coolfit.

Sylvania. A source of inspiration.





Dichroic 50W



Coolfit 50W

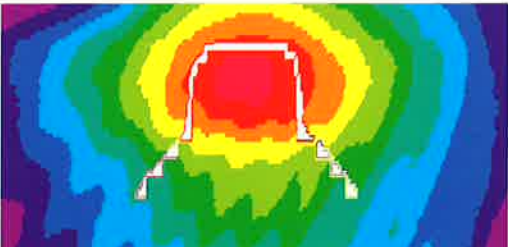


Coolfit spots were compared with dichroic lamps to determine how much heat was generated at sensitive points in the fixture. The temperature was measured where the fixture rim met the ceiling, on the surface above the lamp and on the socket wiring. In every case the Coolfit gave off substantially less heat than the ordinary lamps. The durable reflective coating also produces a clearer, crisper light that's as strong at the end of the bulb's life as it is at the start. This makes it perfect for settings where the appearance of lamp and fixture is absolutely critical.

Temp. (°C)

- 30-35
- 35-40
- 40-45
- 45-50
- 50-55
- 55-60
- 60-65
- 65-70
- 70-75
- 75-80
- 80-85
- 85-90

Dichroic



Coolfit



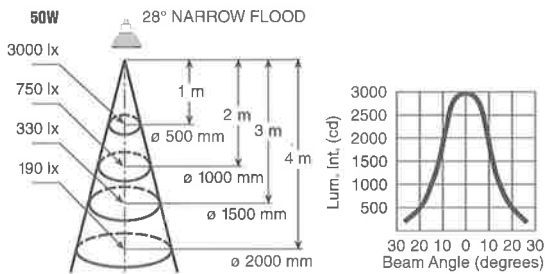
© Central Research Laboratory



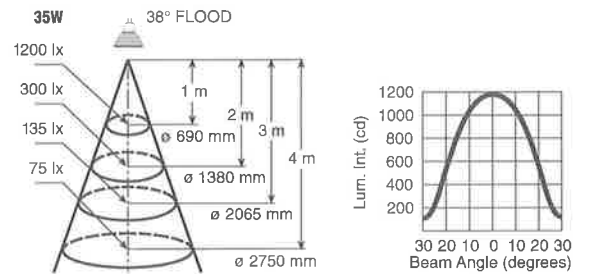
Product data

	Max Overall Length (mm)	Max Reflector Dia. (mm)	Cap	Av. life (hrs)	Luminous Peak Intensity (Cd)	Colour Temp. (K)	Colour rendering Index (Ra)	Beam Angle	Std Pack quantity	EAN Code No. Order No.
20W 36°	49	50.67	GX/GU5.3	3,000	660	3,000	100	36°/FL	10	5410288/22516-6
35W 38°	49	50.67	GX/GU5.3	3,000	1,200	3,000	100	38°/FL	10	5410288/22517-3
50W 28°	49	50.67	GX/GU5.3	3,500	3,000	3,000	100	28°/NFL	10	5410288/22518-0
50W 38°	49	50.67	GX/GU5.3	3,500	1,950	3,000	100	38°/FL	10	5410288/22519-7
50W 60°	49	50.67	GX/GU5.3	3,500	900	3,000	100	60°/WFL	10	5410288/22520-3

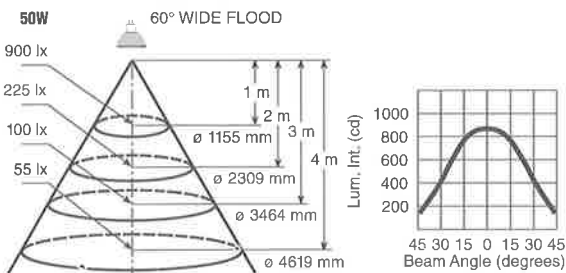
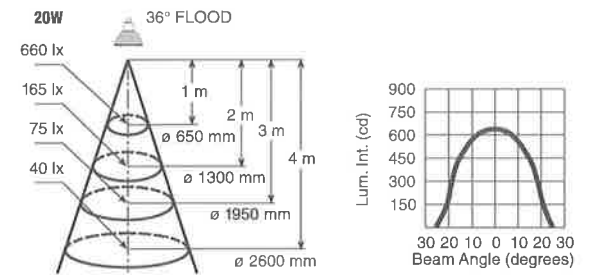
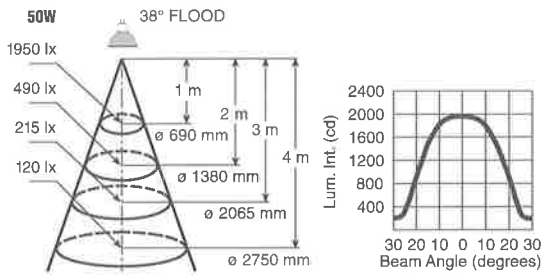
Coolfit 50W



Coolfit 35W



Coolfit 20W



Sylvania reserves the right to change data and specification without notice. Data for guidance only.

SLI LIGHTING LIMITED, OTLEY ROAD, SHIPLEY, W. YORKSHIRE BD17 7SN. TEL: 01274 532552 FAX: 01274 531672