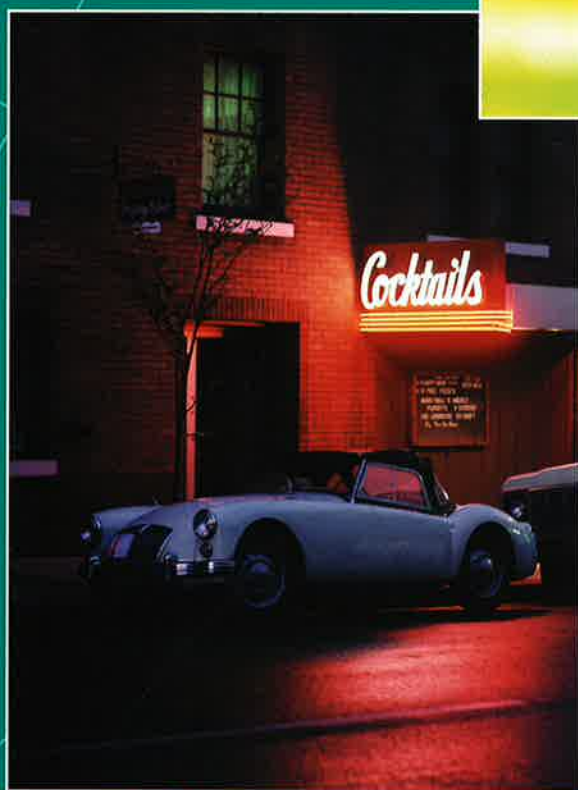


SYLVANIA

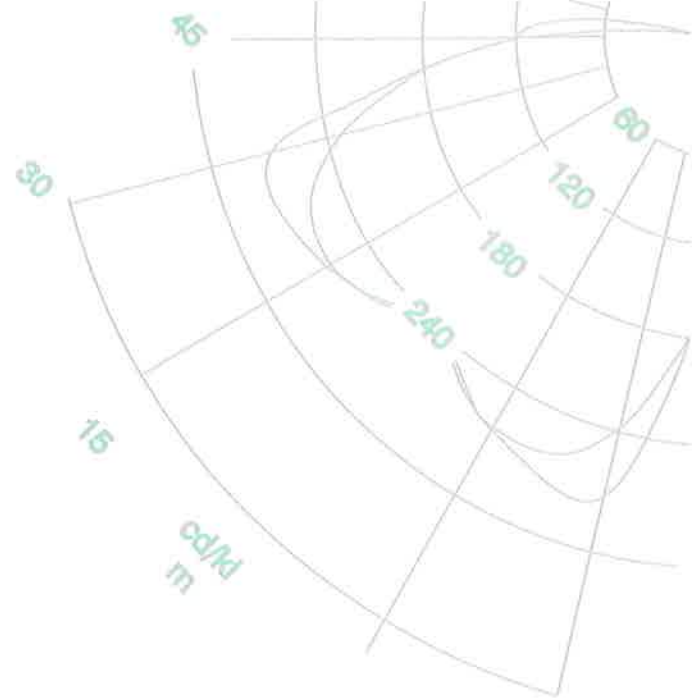
LONG-LIFE LAMPS



Long-Life



The ideal lighting solution for
Special incandescent lamps



Sylvania Long Life lamps are especially recommended for lighting installations with poor access for maintenance such as high factory halls or rooms with high ceilings, stairways, busy public areas and also for general commercial and domestic lighting.



Thanks to their long life these lamps need only be changed infrequently.

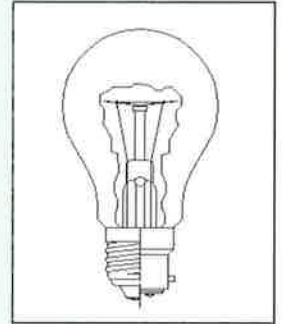
The series also includes a number of lamps with a reinforced construction. These lamps are resistant to extreme vibrations and bad weather conditions, which means they are ideally suited for the permanent illumination of exposed shopping walkways or public building areas.

All lamps comply with the relevant requirements of standards IEC 64 and IEC 432.



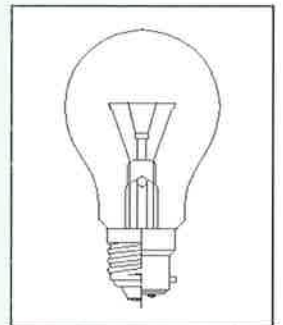
GLS 60MM - LONG LIFE 2500H

Code	Watt	Volt	Cap	Bulb	Diameter (mm)	Max. L (mm)	Avg Life (h)	Rated Lumens	Pack Qty
12940	25	240	E27	Clear	60	104	2500	190	100
12943	25	240	E27	Satin	60	104	2500	190	100
13040	40	240	E27	Clear	60	104	2500	300	100
13043	40	240	E27	Satin	60	104	2500	300	100
13140	60	240	E27	Clear	60	104	2500	530	100
13143	60	240	E27	Satin	60	104	2500	530	100
13240	75	240	E27	Clear	60	104	2500	730	100
13243	75	240	E27	Satin	60	104	2500	730	100
13340	100	240	E27	Clear	60	104	2500	1080	100
13343	100	240	E27	Satin	60	104	2500	1080	100

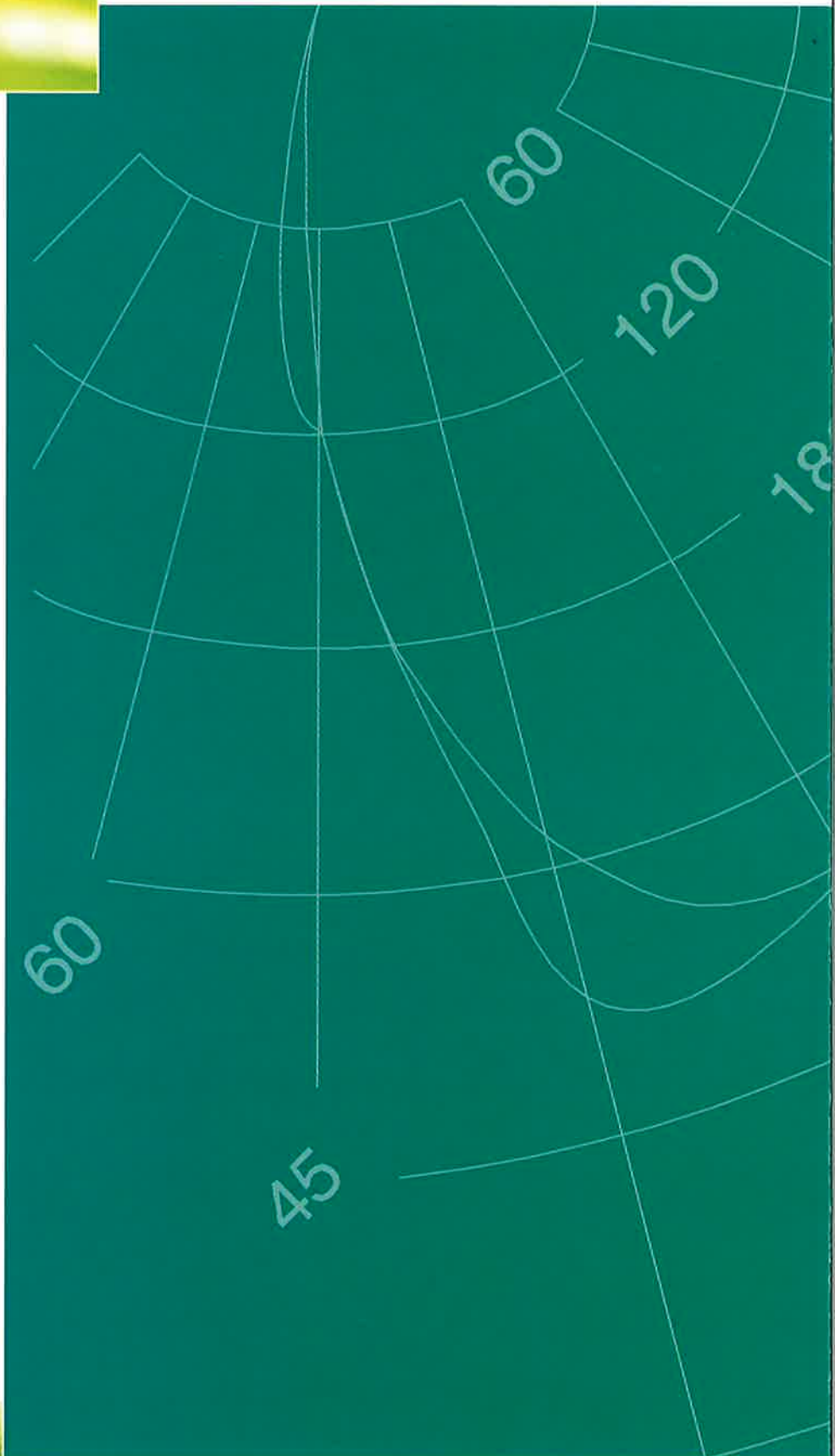


GLS 60MM - LONG LIFE 5000H

Code	Watt	Volt	Cap	Bulb	Diameter (mm)	Max. L (mm)	Avg Life (h)	Rated Lumens	Pack Qty
(1)	25	230	E27	Frosted	60	104	5000	185	100
(1)	25	230	B22	Frosted	60	103	5000	185	100
(1)	40	230	E27	Frosted	60	104	5000	190	100
(1)	40	230	B22	Frosted	60	103	5000	190	100
(1)	60	230	E27	Frosted	60	104	5000	350	100
(1)	60	230	B22	Frosted	60	103	5000	350	100
(1)	75	230	E27	Frosted	60	104	5000	720	100
(1)	75	230	B22	Frosted	60	103	5000	720	100
(1)	100	230	E27	Frosted	60	104	5000	690	100
(1)	100	230	B22	Frosted	60	103	5000	690	100



(1) On demand



SYLVANIA

Data for guidance only. Sylvania reserves the right to change data without notice.
SYLVANIA LIGHTING INTERNATIONAL, 20 ROUTE DE PRÉ-BOIS, CH-1215 GENEVA 15, SWITZERLAND. TEL + 41 (0)22/717 08 11 FAX + 41 (0)22/798 37 68
SYLVANIA LIGHTING INTERNATIONAL Ltd, AVIS WAY, BN9 OED. TEL: + 44 1273 515811 FAX: + 44 1273 512688