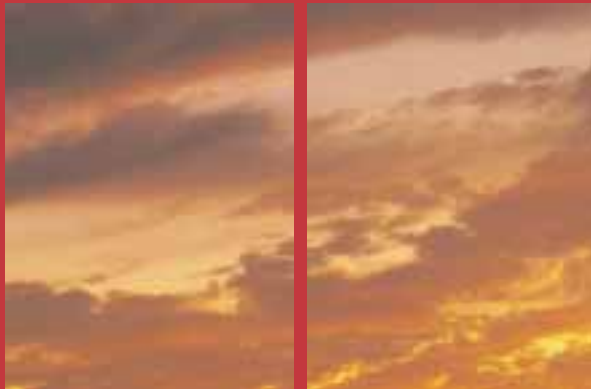




MICRO-LYNX F

A NEW GENERATION OF COMPACT FLUORESCENT LAMPS



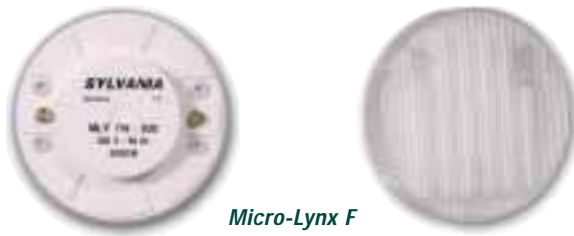
SYLVANIA

by Sylvania Lighting International

MICRO-LYNX F APPLICATIONS

The new light weight, ultra low profile Micro-Lynx F compact fluorescent lamp with integral electronic ballast is an aesthetically pleasing, ultra compact, low temperature and energy efficient alternative to incandescent and halogen lighting.

LIGHT WEIGHT AND ULTRA COMPACT



HIGH PERFORMANCE COMBINED WITH ENERGY EFFICIENCY

Quick and easy to install Micro-Lynx F delivers more than 30 lumens per watt from a T2 7W light source mounted in six flat and in parallel sections behind a semi opaque prismatic diffuser.

APPLICATIONS

New concepts in indoor fixture lighting

Furniture lighting

Display lighting

Pathway and Stairway lighting

Low energy lighting applications



MICRO-LYNX F

FEATURES



HOTEL LOBBY



STAIRWAY LIGHTING



INDOOR PATHWAY LIGHTING



PHYSICAL APPEARANCE

Unique cylindrical ultra low profile housing, complete with internally reeded semi opaque diffuser, measuring only 75mm wide x 25mm high.

INTEGRATED ELECTRONIC BALLAST

The integrated state of the art high frequency electronic ballast ensures immediate ignition when the lamp is switched on, improved life performance and safe close down at the end of lamp life.

HIGH LUMEN EFFICACY

The T2 7W lamp, mounted flat and in parallel in six sections above the reflective surface that conceals the electronic ballast, delivers 30 lumen per watt.

EASY INSTALLATION

The GX53 lamp holder and "twist and lock" lamp cap are quick and easy to install ensuring reduced installation times and costs.

LONGER LIFE

With an average rated life of 6000 hours Micro-Lynx F lamps last up to six times longer than normal halogen or incandescent lamps.

LOWER OPERATING TEMPERATURE

The low operating temperature allows new compact fixture design possibilities.

CHOICE OF COLOURS

Micro-Lynx F is currently available in Warmwhite Deluxe 3000°K or Coolwhite 4000°K.

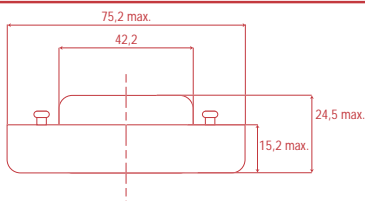


MICRO-LYNX F

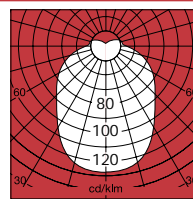
A NEW GENERATION OF COMPACT FLUORESCENT LAMPS



Micro-Lynx F 7W/830



Dimensions Micro-Lynx F



Polar Diagram Micro-Lynx F

Micro-Lynx F

Item description	Wattage	Input voltage	Base	Bulb	Dimensions		Light output	Colour temperature	CRI (group)	Average life	Ordering Code
	W	V			D mm	H mm					
Warmwhite Deluxe											
Micro-Lynx F 7W/830	7	230	GX53	T2	75,2	24,5	220	3000	1B	6000	0025218
Coolwhite Deluxe											
Micro-Lynx F 7W/840	7	230	GX53	T2	75,2	24,5	220	4000	1B	6000	0025219